

**FLI<sup>®</sup>**  
**FUTURE LIGHTING INTERNATIONAL LTD**  
**SAVE ENERGY WITH LIGHT - LESS HEAT MORE BRIGHT**

## Catalogue LED-Lighting Solutions

The present catalogue shows only an overview of the most used models of possible LED replacements. The total assortment is more extensive and covers also all necessary models of designed light. Our engineers create for all interested customers an individual solution with an energy saving result by minimum 70%. Our different manufacturers are able to fulfil each selected creation.



# What is LED?



LEDs (Light Emitting Diodes) are solid-state semiconductor devices that convert electrical energy directly into light. The heart of a LED is a semiconductor chip of which one side is bonded to the top of reflector cup often called the anvil. The anvil carries the negative current. The other side of the semiconductor is connected with a micro wire often referred to as the whisker, which supplies the positive current. This assembly is encapsulated in such a way as the upper half of the epoxy resin encapsulation is precisely shaped and acts as a lens to alter the beam angle or divergence.

With the advent of the blue LED the combination of RGB LEDs enabled a new application of LED technology in the way of RGB based white illumination. Coupled with more advanced intensity control full spectrum RGB LED projection came to be. The advent of the blue LED technology enabled the application of the ultimate aim of LED development. Super-bright white light LEDs can actually replace the conventional light sources which is being realized today.

**Features and benefits of LEDs:** The inherent features of LEDs is decidedly the ability of LEDs to become the best alternative to conventional light sources, and provide a wider range of applications.

**Small Size:** A LED is essentially a microscopic chip, that, once encapsulated in an epoxy resin, is extremely small and lightweight.

**Long Power Consumption:** LEDs consume very little power, far less than standard light bulbs leading to greatly reduced energy costs and extremely enhanced global energy savings. LEDs also require far less energy to manufacture than other light sources, reducing the environmental impact of artificial lighting even further. Generally a LED is designed to operate at 2 - 3.6V, 0.02-0.03A current which means a LED typically requires no more than 0.1W to operate.

**Rugged:** LEDs are rugged, solid state devices and are not susceptible to vibration such as with incandescent filament based bulbs.

**Long Lifetime:** When operating at specified voltage, current, and within specified environmental conditions, LEDs can enjoy a long life of up to 100,000 hours. A newer way to evaluate LED lifetime has been established and adopted by Neo-Neon which is based on lumen depreciation over time to determine the Mean Time between Failure (MTBF).

**High Luminous Efficiency and Low heat emitting:** Due to the special materials that are used to manufacture LEDs during electrons transition, LEDs mainly emit electromagnetic energy in the visible parts of spectrum. This is unlike filaments which are heated and emit large amounts of electromagnetic energy in the infrared spectrum which can't be seen and is felt as heat. That is to say, LEDs can convert significantly more of the energy applied into light, and therefore LEDs have a higher luminous efficiency with substantially lower amounts of heat produced.

**Environmental Protection:** LEDs are made from non-toxic materials, unlike fluorescent lights that contain mercury which poses a danger to the environment and human health.

# Power LED Spotlights

The Power LED Spotlights make use of High Power LED. These Spotlights are the best solution for galleries, auxiliary lighting of villas, restaurants, hotels, meeting rooms, shops, telephone cabinets, counters and commercial lighting of jewellery, glasses and so on.



Colour	Output	Lumen (lm)	Item Number by Beam angle	
			Spot 30°	Spot 40°
Warm White	3W	110	10-0101W003	10-0102W003
Normal White	4W	180	10-0101W004	10-0102W004
Normal White	3W	120	10-0101N003	10-0102N003
White	4W	200	10-0101N004	10-0102N004
Cold White	3W	130	10-0101C003	10-0102C003
White	4W	230	10-0101C004	10-0102C004

**Product Features:**

Acrylic lens (PMMA) with high light transmission

Weight: 50 g



Output	Lumen (lm)	Colour	Item Number
3 W	300	Warm White	10-0104W003
		Cold White	10-0104C003



Output	Lumen (lm)	Colour	Item Number by Beam angle	
			Spot 38°	Spot 60°
6 W		Warm White	10-0105W006	10-0106W006
		Cold White	10-0105C006	10-0106C006



Output	Lumen (lm)	Colour	Item Number
4W	300	Warm White	10-0107W004

**Product Features:**

Dimmable



Output	Lumen (lm)	Beam angle	Colour	Item Number
3W	140	70°	Warm White	10-0108W003
			Normal White	10-0108N003

## LED Spot - GU10



Output	Colour	Lumen (lm)	Item Number by Beam angle	
			Spot 30°	Spot 40°
3W	Warm White	110	10-0201W003	10-0202W003
	Normal White	120	10-0201N003	10-0202N003
	Cold White	130	10-0201C003	10-0202C003

**Product Features:**

Voltage: 95 -265 V

Weight: 50g



Output	Colour	Item Number by Beam angle	
		Spot 38°	Spot 60°
6 W	Warm White	10-0205W006	10-0206W006
	Cold White	10-0205C006	10-0206C006

## LED Spot - E14



Reflector	Fixture	Output	Colour	Lumen	Item Number
R50	E14	3 × 1W	Warm White	240	10-0301W003
			Cold White	300	10-0301C003

**Product Features:**

Voltage: 200 - 250 V

Beam Angle: 38°

Material: Aluminium, Lens made from PC



Output	Colour	Item Number by Beam angle	
		Spot 38°	Spot 60°
6 W	Warm White	10-0305W006	10-0306W006
	Cold White	10-0305C006	10-0306C006

## LED Spot - Mixed



Output	Beam Angle	Lumen (lm)	Fixture	Item Number by Colour	
				Warm White	Normles White
3 W	70°	140	GU10	10-0208W003	10-0208N003
			E14	10-0308W003	10-0308N003
			E27	10-0408W003	10-0408N003



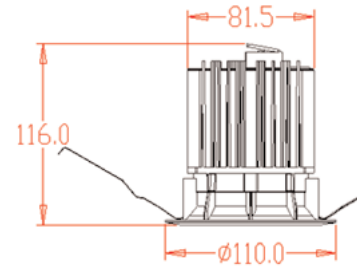
**Product Features:**

Voltage: 85 - 250 V

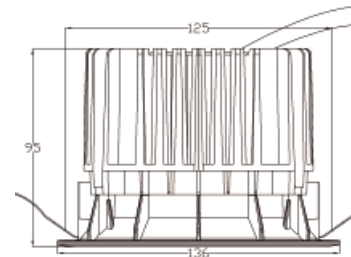
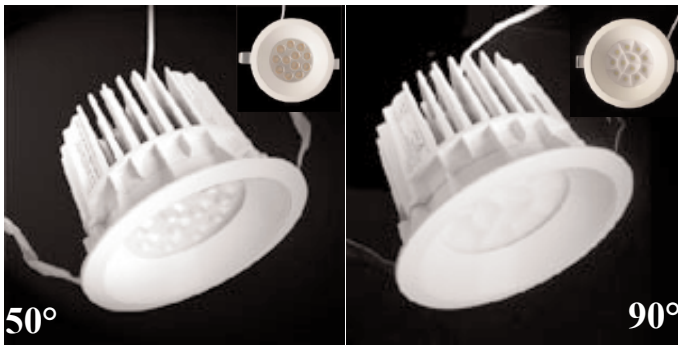
Beam Angle: 70°

# Down Lights

50°



Output	Weight	Beam Angle	Colour	Lumen (lm)	Item Number
6 × 1W	540g	50°	Warm White	380	20-0201W006
			Normal White	480	20-0201N006
		90°	Warm White	380	20-0202W006
			Normal White	480	20-0202N006



Output	Weight	Beam Angle	Colour	Lumen (lm)	Item Number
12 × 1W	1080g	50°	Warm White	740	20-0301W012
			Normal White	920	20-0301N012
		90°	Warm White	740	20-0302W012
			Normal White	920	20-0302N012

## Product Features:

Voltage: 100 - 240 V/AC  
 Housing: Aluminium  
 Reflector: Silver color  
 Working Temperature: 0°C~ +35°C  
 Life Time: 40.000 hours (brightness maintenance rate 70%)

This product works as replacement of traditional Down Light.

## Notes:

- 1) The thickness of ceiling material should be 5-25mm.
- 2) No sundries around, no cover on the Down Light due to heat sinking concern.

## Down Lights - Type AR 111



Voltage: 230 V  
Weight: 260g  
Depth: 95mm

Output	Colour	Lumen (lm)	Beam Angle	Fixture	Item Number
7 × 1W	Warm White	330	45°	Philips Wire	20-0412W007
			60°	Philips Wire	20-0422W007
	Normal White	370	45°	Philips Wire	20-0412N007
			60°	Philips Wire	20-0422N007



Voltage: 230 V  
Weight:  
Depth: 95mm

Output	Colour	Lumen (lm)	Beam Angle	Fixture	Item Number
9 × 1W	Warm White	420	45°	Philips Wire	20-0411W009 20-0412W009
			60°	Philips Wire	20-0421W009 20-0422W009
	Normal White	500	45°	Philips Wire	20-0411N009 20-0412N009
			60°	Philips Wire	20-0421N009 20-0422N009



Voltage: 12 V  
Weight:  
Depth:

Output	Colour	Lumen (lm)	Beam Angle	Fixture	Item Number
10 W	Warm White	500		Philips	20-0431W010



Voltage: 230 V  
Weight:  
Depth:

Output	Beam Angle	Fassung	Colour	Lumen (lm)	Item Number
12 W	40°	GU10	Warm White	550	20-1001W012
			Normal White	640	20-1001N012

### Fixture



Philips



GU10

# Down Lights



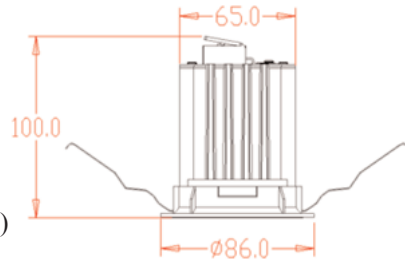
Beam Angle	Output	Weight	Voltage	Colour	Lumen (lm)	Item Number
38°	3 × 1W	180g	12 -24 V	Warm White	200	20-0601W003
				Normal White	240	20-0601N003
			110/220V	Warm White	200	20-0602W003
				Normal White	240	20-0602N003



Beam Angle	Voltage	Output	Weight	Colour	Lumen (lm)	Item Number
50°	100 - 240 V	4 × 1W	350 g	Warm White	260	20-0100W004
				Normal White	310	20-0100N004

**Product Features:**

- Housing: Aluminium
- Reflector: Silver colour
- Working Temperature: 0°C~ +35°C
- Life Time: 40.000 hours (brightness maintenance rate 70%)



This product works as replacement of traditional Down Light.

**Notes:**

- 1) The thickness of ceiling material should be 5-25mm.
- 2) No sundries around, no cover on the Down Light due to heat sinking concern.



Output	Size	Lumen (lm)	Item Number
5 W	Ø125 × 67 mm		20-0701N005
10 W	Ø190 × 96 mm		20-0702N010

**Product Features:**

- Fixture: Wire
- Colour: Normal White

## Down Lights - Typ PAR



PAR	Size	Output	Weight	Colour	Lumen (lm)	Beam Angle	Item Number
30	93 × 32mm	7 × 1W	220g	Warm White	330	15°	20-0501W007
						30°	20-0502W007
						45°	20-0503W007
				Normal White	370	15°	20-0501N007
						30°	20-0502N007
						45°	20-0503N007
38	120 × 54mm	9 × 1W	380g	Warm White	420	15°	20-0501W009
						30°	20-0502W009
						45°	20-0503W009
				Normal White	500	15°	20-0501N009
						30°	20-0502N009
						45°	20-0503N009
		12 × 1W	390g	Warm White	550	15°	20-0501W012
						30°	20-0502W012
						45°	20-0503W012
				Normal White	600	15°	20-0501N012
						30°	20-0502N012
						45°	20-0503N012

Voltage: 100-240V  
Fixture: E27



PAR	Size	Output	Weight	Beam Angle	Colour	Lumen (lm)	Glass	Item Number
30		8 W		45°	Warm White	500	Frosted	20-0504W008
					Cold White	600	Clear	20-0504N008
38		15 W		45°	Warm White	850	Frosted	20-0504W015
					Cold White	950	Clear	20-0504N015



## LED-Tubes - T10

Perfect substitute for conventional fluorescent tubes with G13 base, backside made out of aluminium (perfect cooling characteristics) front cover in clear unbreakable polycarbonate or completely glass for application in office space, warehouse, schools, cold storage rooms, outdoor lighting and any place hard to reach. Available in daylight, coolwhite and warmwhite.

Due to innovative development this LED tube generates the same or even higher lumen output in comparison with a fluorescent tube without making use of any additional reflector! Very long life time up to 50,000 hours, high lumen output and low power consumption, no replacement cost anymore. Direct start without ignition flickering, continual switching on/off without any problem.



Length	Output	LED Qty	Colour	Lumen (lm)	Item Number by Material	
					Glas	PC
600mm	9W	168stk	Warm White	700	30-0601W009	30-0602W009
			Normal White	750	30-0601N009	30-0602N009
			Cold White	800	30-0601C009	30-0602C009
1200mm	15W	276stk	Warm White	1200	30-1201W015	30-1202W015
			Normal White	1300	30-1201N015	30-1202N015
			Cold White	1400	30-1201C015	30-1202C015
	18W	336stk	Warm White	1400	30-1201W018	30-1202W018
			Normal White	1500	30-1201N018	30-1202N018
			Cold White	1600	30-1201C018	30-1202C018
1500mm	22W	432stk	Warm White	1650	30-1501W022	30-1502W022
			Normal White	1750	30-1501N022	30-1502N022
			Cold White	1850	30-1501C022	30-1502C022

Voltage: 90 - 285 V/AC  
with external power supply

Diameter: 30mm (T10)  
Beam Angle: 120°



## Cassettes for LED-Tubes



Size (mm)	Required Tubes	Item Number
598 × 598 × 90	3 × 600mm	90-0100Z060
1198 × 598 × 90	3 × 1200mm	90-0100Z120

Cassette for installing and powering three Tubes Type T8 to T12. The outer bottom adopt 0.5MM thick steel (with spurt plastic), panel is acryl (ivory-white/clarity wafer)

# LED-Tubes - T8

## T8 in 2 different beam angles with changeable Fixture



Length	Output	LED Qty	Lumen (lm)	Colour	Item Number by Beam angle	
					120°	180°
600mm	9W	174stk	750	Normal White	30-0603N009	30-0604N009
				Cold White	30-0603C009	30-0604C009
1200mm	18W	360stk	1500	Normal White	30-1203N018	30-1204N018
				Cold White	30-1203C018	30-1204C018
1500mm	22W	450stk	1900	Normal White	30-1503N022	30-1504N022
				Cold White	30-1503C022	30-1504C022

Voltage: 90 - 285 V/AC with internal transformer

Diameter: 25.4 mm (T8)  
Tube material: PC

changeable fixture  
possible positions: 0° / 45° / 90°

## T8 with external power supply and 240° beam angle



Length	Output	Consumption	LED Qty	Colour	Lumen (lm)	Item Number by Glass-Colour	
						Frosted	Clear
600mm	9W	10W	144stk	Warm White	800	30-0605W009	30-0606W009
				Normal White		30-0605N009	30-0606N009
				Cold White		30-0605C009	30-0606C009
1200mm	17W	18W	288stk	Warm White	1400	30-1205W017	30-1206W017
				Normal White		30-1205N017	30-1206N017
				Cold White		30-1205C017	30-1206C017
1500mm				Warm White		30-1505W022	30-1506W022
				Normal White		30-1505N022	30-1506N022
				Cold White		30-1505C022	30-1506C022

Voltage: 90 - 285 V/AC with external transformer  
Diameter: 25,4 mm (T8)

Tube material: Glass registered patent

## T8 with internal or external power supply and 120° beam angle



Length	Output	LED Qty	Glass-colour	Lumen (lm)	Item Number by Colour		
					Warm White	Normal White	Cold White
600mm	8 W	120stk	Frosted	680	30-0607W008	30-0607N008	30-0607C008
			Clear	800	30-0608W008	30-0608N008	30-0608C008
	10 W	144stk	Frosted	800	30-0607W010	30-0607N010	30-0607C010
			Clear	950	30-0608W010	30-0608N010	30-0608C010
900mm	12 W	180stk	Frosted	965	30-0907W012	30-0907N012	30-0907C012
			Clear	1150	30-0908W012	30-0908N012	30-0908C012
1200mm	18 W	288stk	Frosted	1600	30-1207W018	30-1207N018	30-1207C018
			Clear	1800	30-1208W018	30-1208N018	30-1208C018
	22 W	360stk	Frosted	1953	30-1207W022	30-1207N022	30-1207C022
			Clear	2130	30-1208W022	30-1208N022	30-1208C022
1500mm	22 W	360stk	Frosted	1953	30-1507W022	30-1507N022	30-1507C022
			Clear	2130	30-1508W022	30-1508N022	30-1508C022
	26 W	432stk	Frosted	2300	30-1507W026	30-1507N026	30-1507C026
			Clear	2520	30-1508W026	30-1508N026	30-1508C026

# Bulbs

The power LED Bulbs have many shapes such as globe, pear, candle, flame and mushroom. With 3W-10W actual power consumption, the newest Power LED Bulbs can be used as replacement of traditional light bulbs of 40W-60W especially in hotels, restaurants, home areas and some public areas.

Illumination and decoration at home and public areas; Suitable for commercial building, villa, restaurant, hotel, meeting room, table lamp, garden lamp etc.



Voltage: 85 - 265 V  
 Life Time: 50.000 hours  
 Frequency: 50 - 60 Hz  
 Working Temperature: -40~55°C  
 Weight: 0.2g  
 Fixture: E27

Output	Diameter	Material	Colour	Lumen (lm)	Item Number	
4 × 1W	55mm	Aluminium/ Glas	Warm White	200	40-0100W004	
			Normal White		40-0100N004	
			Cold White	240	40-0100C004	
5 × 1W			Warm White	250	40-0100W005	
			Normal White		40-0100N005	
			Cold White	300	40-0100C005	
6 × 1W		60mm	Aluminium/ Glas	Warm White	300	40-0100W006
				Normal White		40-0100N006
				Cold White	360	40-0100C006
6 × 1W	Ersetzt 60W Glühbirne		Aluminium/ PC	Warm White	380	40-0101W006
				Normal White		40-0101N006
				Cold White	460	40-0101C006
3 × 2W		Warm White	380	40-0102W006		
		Normal White		40-0102N006		
		Cold White	460	40-0102C006		
6 × 1W		Warm White		40-0103W006		
		Normal White		40-0103N006		
		Cold White		40-0103C006		
12 × 1W		Warm White		40-0101W012		
		Normal White	680	40-0101N012		
		Cold White		40-0101C012		



Diameter: 60mm  
 Material: Aluminium/Glass  
 Fixture: E27  
 Lumen: 390lm

Output	Colour	Item Number
5 × 1W	Normal White	40-0104N005



Fixture: E27

Output	Colour	Lumen (lm)	Item Number
4 W	Warm White	270	40-0105W004
	Normal White	310	40-0105N004



Fixture: E27

Output	Colour	Lumen (lm)	Item Number
7 W	Warm White		40-0106W007
	Normal White	600	40-0106N007

# Candelabra



**Product Features:**

Life Time: 35.000 hours  
 Colour: Warm White  
 Lumen: 90 lm  
 Consumption: 1.7 W and 3 W  
 Outpu equals 15 W and 25 W  
 Consumption respectively

Fixture	Voltage	Glass	Item Number by Output	
			1.7W	3 W
E12	110V	Klar	40-0211W001	40-0211W003
		Trüb	40-0212W001	40-0212W003
E14	100-240V	Klar	40-0221W001	40-0221W003
		Trüb	40-0222W001	40-0222W003
E26		Klar	40-0231W001	40-0231W003
		Trüb	40-0232W001	40-0232W003
E27		Klar	40-0241W001	40-0241W003
		Trüb	40-0242W001	40-0242W003



**Product Features:**

Voltage: 230 V  
 Fixture:  
 Lumen: 240lm  
 Material: Aluminium and Glass  
 Size: Ø 35 × 115 mm

Output	Colour	Glass	Item Number
3 W	Warm White	Clear	40-1001W003
	Normal White	Frosted	40-1001N003

# LED Commercial Light Serie

Applications: Office building, industrial area, commercial/market place, residential or indoor lighting

Advantages and Features:

- Skillfull circuit design and unique geometry illuminant appearance create an ideal illumination capacity
- It is adaptable to any environment such as low temperature and high temperature
- Standard for Street-Lights (no starter, no ballast)
- easy installation



Beam Angle: 360°  
 Voltage: 110/220 V/AC, (12V/DC on request)  
 Working Temperature: -30 ~ 50°C  
 Life Time: over 50,000 hours  
 Material: Glass / PBT (excl. 50W: PC / Aluminium)

Output	Consumption	Size Ø × Length	SMD Qty	Colour	Lumen (lm)	Item Number by Fixture	
						E27	E40
12W		90 × 180mm	32stk	Warm White		50-0101W012	50-0102W012
				Normal White		50-0101N012	50-0102N012
18W		90 × 210mm	48stk	Warm White		50-0101W018	50-0102W018
				Normal White		50-0101N018	50-0102N018
22W	25W	90 × 270mm	72stk	Warm White	2000	50-0101W022	50-0102W022
				Normal White	2500	50-0101N022	50-0102N022
36W	40W			Warm White	2500	50-0101W036	50-0102W036
				Normal White	3000	50-0101N036	50-0102N036
50W			144stk	Warm White	3000	50-0101W050	50-0102W050
				Normal White	3600	50-0101N050	50-0102N050



Output	Colour	Lumen (lm)	Item Number
10W	Warm White	530	50-0105W010
	Normal White		50-0105N010

Fixture: E27  
 Beam Angle: 360°  
 Size: Ø 45 × 155mm

# PIN



Output	Size Ø × Length	Colour	Lumen (lm)	Item Number
5W		Warm White		50-0203W005
		Normal White		50-0203N005
7W		Warm White		50-0203W007
		Normal White		50-0203N007
10W		Warm White		50-0203W010
		Normal White		50-0203N010



Output	Size Ø × Length	Colour	Lumen (lm)	Item Number
6W		Normal White	344	50-0204N006
9W		Normal White	500	50-0204N009



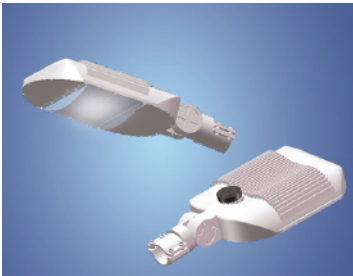
Output	Colour	Lumen (lm)	Item Number
10W	Warm White	550	50-0205W010
	Normal White	550	50-0205N010

Fixture: 4 Pins  
 Beam Angle: 360°  
 Size: Ø 45 × 155mm

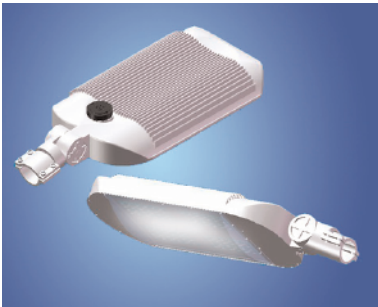
# Street-Lights

High Power LED Street Light Series are all excellent substitutes for traditional street lighting. Advanced LED technology have been applied not only for illuminating road ahead, but also for bringing an absolutely new breath into city illumination. There are 3 available colour temperatures for the LED Street Light Series to meet different customer requirements. Seeing father and standing higher LED Lightes are combined to open up new lighting solutions characteristic of novelty, energy saving, low maintenance and eco-friendliness.

LED Street Light is an energy-saving product that utilizes high power LEDs as a light source. It can be directly connected with a 85-265V/AC power supply. In the colour spectrum, there ist no ultraviolet light, no infrared rays, no heat and no radiation produced. As a result is this LED Street light a conventional “green” lighting source. The lamp casing is made of aluminium-alloy through die-casting. The lamp cover material uses high quality toughened glass, which is highly lucent, dust-proof and waterproof. The product it safe, reliable, has low energyconsumption and a long lifespan.

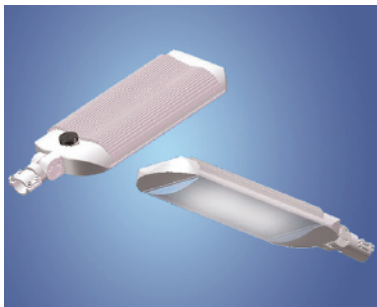


↑60W  
↓120W



Output	Con- sumption	Lumen (lm)	Size (mm)	Weight (kg)	Colour	Item Number
56W	60W	3,500	564 × 315 × 122	8	Warm White	60-0100W056
					Normal White	60-0100N056
					Cold White	60-0100C056
112W	120W	7,000	739 × 315 × 122	11	Warm White	60-0100W112
					Normal White	60-0100N112
					Cold White	60-0100C112
168W	180W	10,000	914 × 315 × 122	15	Warm White	60-0100W168
					Normal White	60-0100N168
					Cold White	60-0100C168

↓180W



Life Time: over 50,000 hours  
Voltage: 85 - 265 V  
Working Temperature: -30°C ~ 50°C  
Storage Temperature: -40°C ~ 80°C

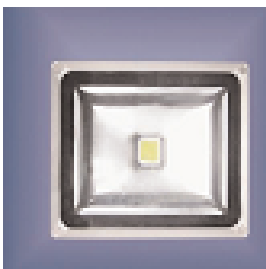
## Street-Lights



Output	LED Qty	Lumen (lm)	Colour	Fixture	Item Number
18W			Normal White	E27	60-0201N018
28W	28stk	2500	Warm White	E27	60-0201W028
				E40	60-0202W028
			Normal White	E27	60-0201N028
				E40	60-0202N028

Voltage: 85-245V/AC  
 Beam Angle: H: 120°, V: 60°  
 Size (Ø × L): 90 × 230mm (E27), 90 × 240 (E40)  
 Life Time: over 50.000 hours  
 Working Temperature: -30 ~ 40°C  
 Material: Aluminium & PC

## Flood Lights



35-50W



60-70W

Voltage: 170 - 250 V  
 Frequency: 50 - 60 Hz  
 Working Temperature: -40°C ~ 60°C  
 Life Time: over 50.000 hours

Output	Lumen (lm)	Size (mm)	Weight	Beam Angle	Item Number
35W	2800	290 × 236 × 183	3,6kg	50°	70-0101N035
				100°	70-0102N035
40W	3200			50°	70-0101N040
				100°	70-0102N040
50W	4000			50°	70-0101N050
				100°	70-0102N050
60W	4800	285 × 360 × 100	6kg	50°	70-0101N060
				100°	70-0102N060
70W	5600			50°	70-0101N070
				100°	70-0102N070
80W	6400			50°	70-0101N080
				100°	70-0102N080



## Industrial Lights

50W

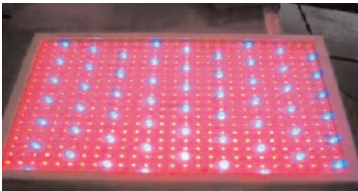
100W



Output	Weight	Lumen (lm)	Fixture	Item Number
50W	1,8Kg	4,000	E27	50-0302N050
			E40	50-0303N050
100W	5kg	8,000	stand alone	50-0301N100

Voltage: 85-256V/AC  
 Beam Angle: 90°  
 Life Time: over 50.000 hours  
 Colour: Normal White

## Plant-Lights



Output	Weight	Lumen (lm)	LED Qty	Size (mm)	Item Number
26W			513stk	425 × 300 × 40	50-0401P026
80W			1539stk	875 × 425 × 40	50-0401P080

Voltage: 24V/DC  
 Wavelength red LED: 660nm  
 Wavelength blue LED: 450nm  
 Life Time: over 50.000 hours  
 Waterproof: IP64

## Flashlight



Output: 3 Watt  
 Size: Ø34 × 104 mm  
 Lumen: up to 120 lm  
 Range: up to 70 Meter  
 Material: durable Aluminium  
 Powered by 3 Batteries Type AAA (not incl.)  
 Water resistant  
 present boxed

**Item Number: 80-0100F003**

## LED - Strips



### Epoxid Strip

Output: 4W/m  
 SMD-Qty: 60 SMD Typ 3528 per m  
 Waterproof: IP 65  
 Packing Unit: 5m Roll

**Item Number: 90-0301EPO030**



### Silikon Strip

Output: 4W/m  
 SMD-Qty: 60 SMD Typ 3528 pro m  
 Waterproof: IP 68  
 Packing Unit: 5m Rolle

**Item Number: 90-0301SIL030**

## Aluminium-Holders for LED - Strips



Profile with semicircle bend cover  
 Width: 22mm  
 Hight: 8mm

Part	Item Number
Aluprofile (by meter)	90-0201A001
Cover (by meter)	90-0201A002
Endpiece large	90-0201A003
Endpiece small	90-0201A004
Plate for Strips	90-0201A005
Mounting Clip	90-0201A006



Profile with rectangular cover  
 Width: 24mm  
 Hight: 10mm

Part	Item Number
Aluprofile (by meter)	90-0201B001
Cover (by meter)	90-0201B002
Endpiece	90-0201A003
Mounting Clip	90-0201B006



Profile for stair mount  
 Width: 50mm  
 Hight: 25mm

Part	Item Number
Aluprofile (by meter)	90-0201C001
Cover (by meter)	90-0201B002

## LED - Bars



Length	Output	LED-Qty	Colour	Item Number
0,5 m	9 W	15 stk	Warm White	91-1005W009
			Normal White	91-1005N009
1,0m	18 W	30 stk	Warm White	91-1010W018
			Normal White	91-1010N018

Volatge: 12 V/DC  
Waterproof: IP60  
Material: Aluminium-Gehäuse

Required power supply unit  
12V/DC, 4A, 60W

**Item Number: 91-1001Z060**

**Power supply units with more power on request!**

Transmission cable for power supply unit: 91-1001K999

Cable to connect 2 Bars: 91-1002K100

### **In General:**

Conditions for delivery are special arrangement! Technical aspects can be subject to change!

**FLI®**

**FUTURE LIGHTING INTERNATIONAL LTD**  
**SAVE ENERGY WITH LIGHT - LESS HEAT MORE BRIGHT**

Future Lighting International Limited  
69 Great Hampton Street  
UK- B18 6EW Birmingham  
Co. 06855967  
Registered in England and Wales

Zweigniederlassung:  
Future Lighting International Limited  
Miegelweg 24, D-31785 Hameln  
Amtsgericht: Hannover HRB 204177  
USt.-ID: DE265248989  
WEEE-Reg-Nr.: DE42217268

Geschäftsführer: Heribert Albert  
Geschäftsführer: Sonja Albert  
Tel: + 49 (0) 5151 55 50 26  
Fax: + 49 (0) 5151 55 50 18  
E-Mail: [albert@future-lighting.de](mailto:albert@future-lighting.de)  
Internet: [www.future-lighting.de](http://www.future-lighting.de)